



RETICULATIONS

LOWPASS

WEB

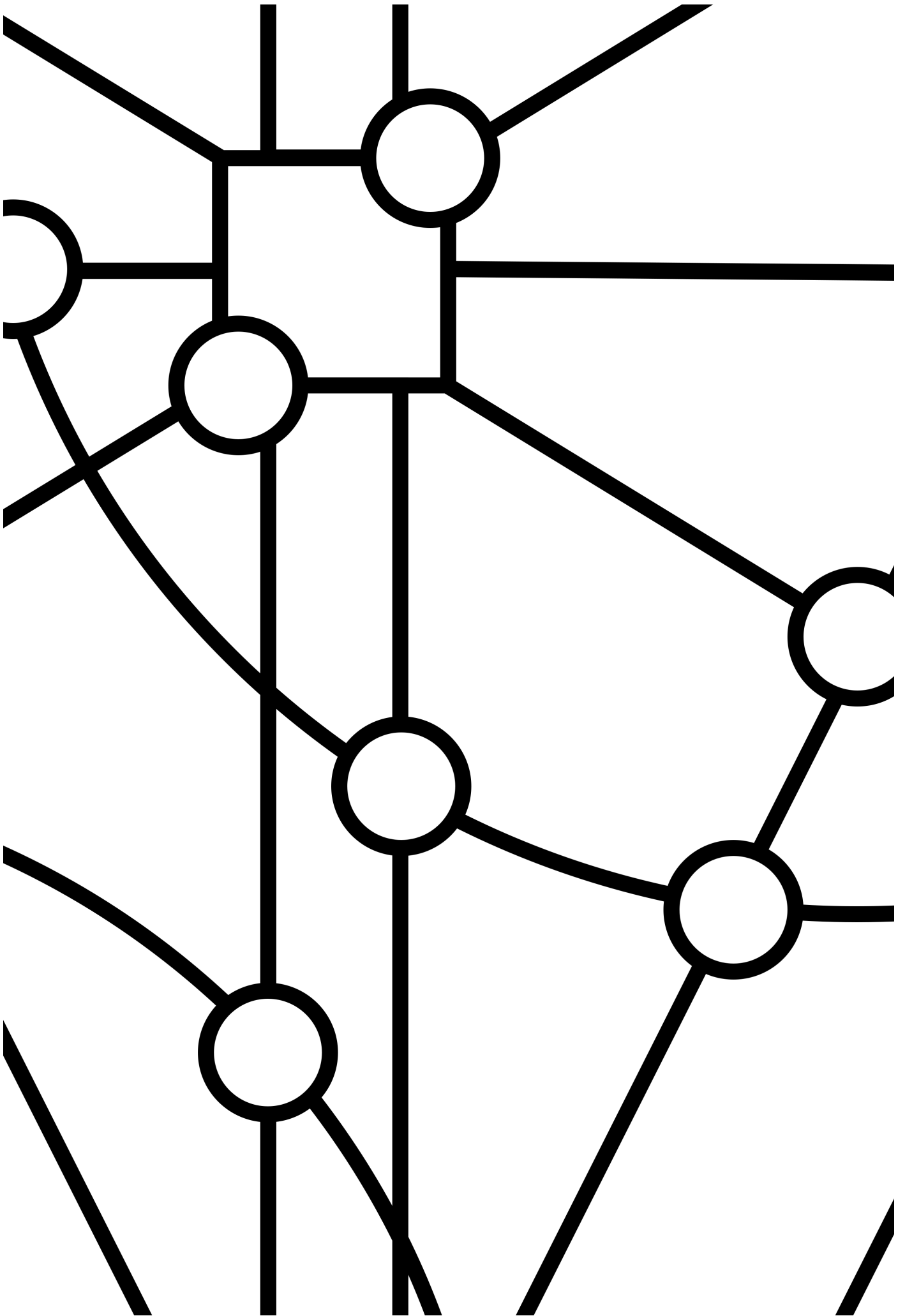
LG

WEB

LG

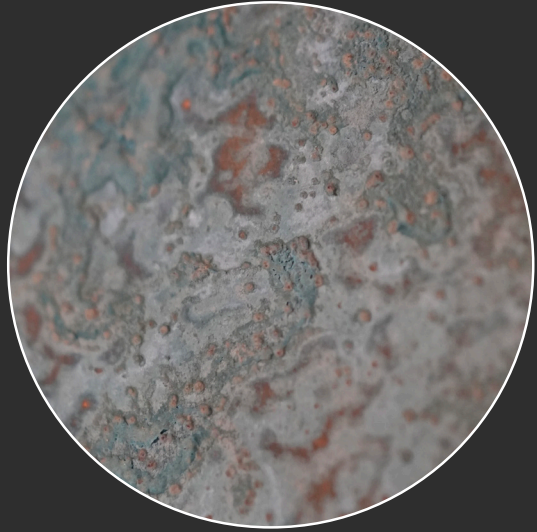
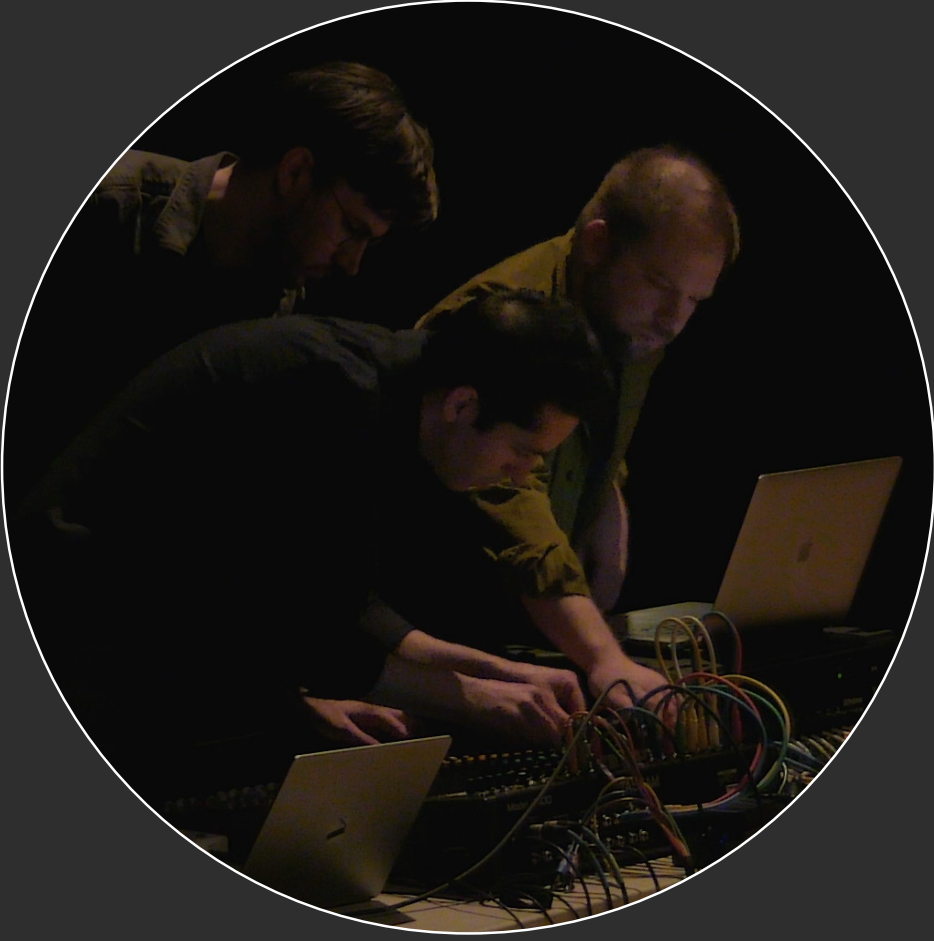
BEHIND THE NOISE

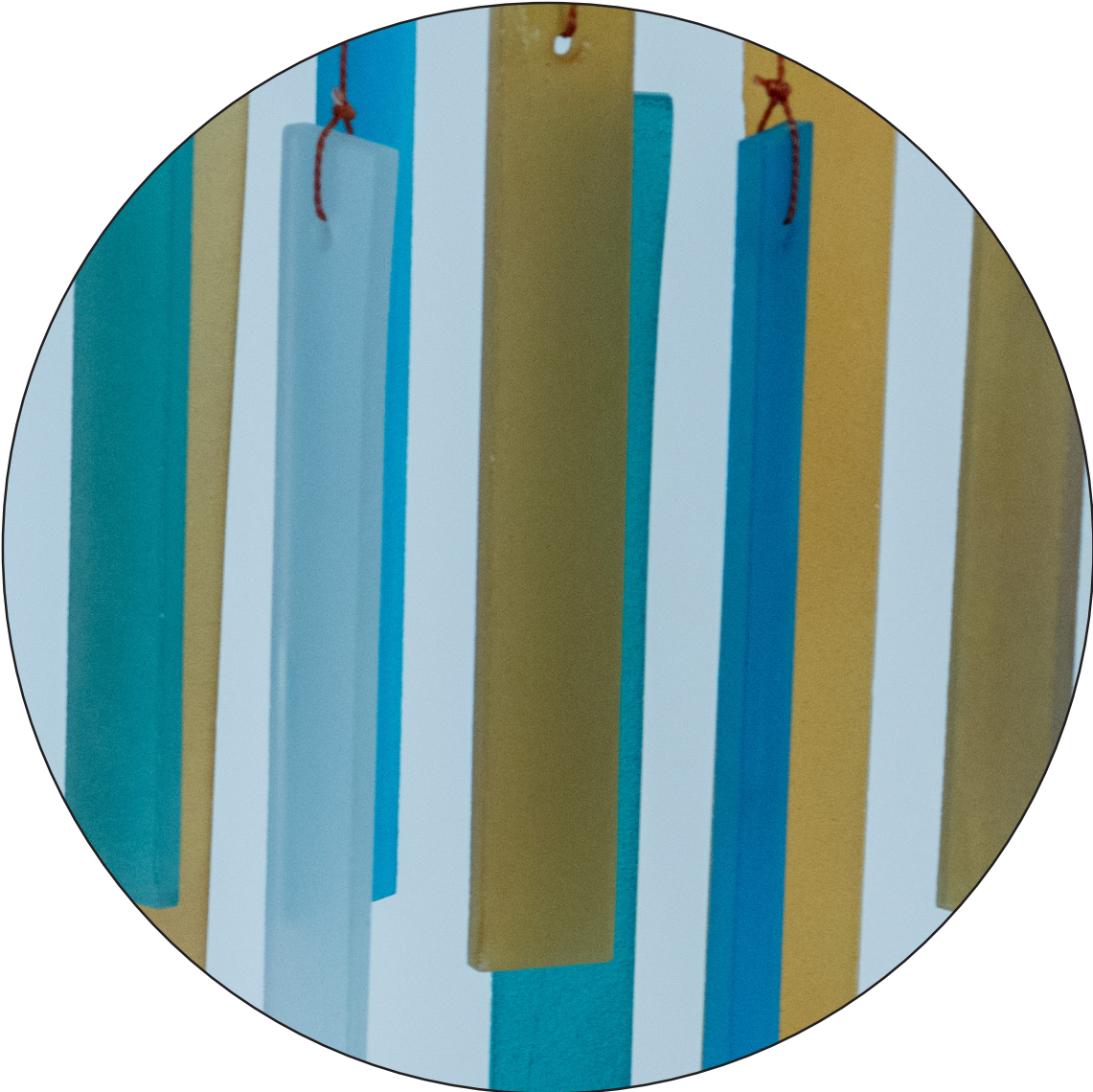
LEMMON



RETICULATIONS | NOUN RE·TIC·U·LA·TIONS:

THE FORMATION OF NET-LIKE PATTERNS,
MESHES, OR NETWORKS OF INTERCONNECTED
LINES, VEINS, OR, IN SPECIALIZED CONTEXTS,
TECHNICAL PROCESSES IN PHOTOGRAPHY OR
METALLURGY.





ABOUT

A NEW COMPOSITION FEATURING NO-INPUT MIXING, LIVE ELECTRONICS, AND A PERCUSSION SET-UP THAT EXPLORES GLASS, CERAMICS, AND METALS FEATURING LIVE IMPROVISATION BY DUO LOWPASS (COMPRISED OF PERCUSSIONISTS TAYLOR LONG AND ROB COSGROVE) AND ERIC LEMMON.

CALLED "BOLD" BY ST. LOUIS' CLASSIC 107.3, LEMMON AND THE DUO INTRODUCE A PERFORMATIVE LANDSCAPE WHERE THE SLIGHTEST VARIATION PRODUCES ENTIRELY NEW SONIC TEXTURES MAKING EACH PERFORMANCE A DISTINCT EXPERIENCE..